

### KEY FEATURES

- **LOW COST ACCESSORY**
- **DUAL BOOST VOLTAGE OUTPUT**
- **WIDE SUPPLY RANGE  $\pm 8V - \pm 150V$**
- **CONVENIENT SIP PIN-OUT**

### APPLICATIONS

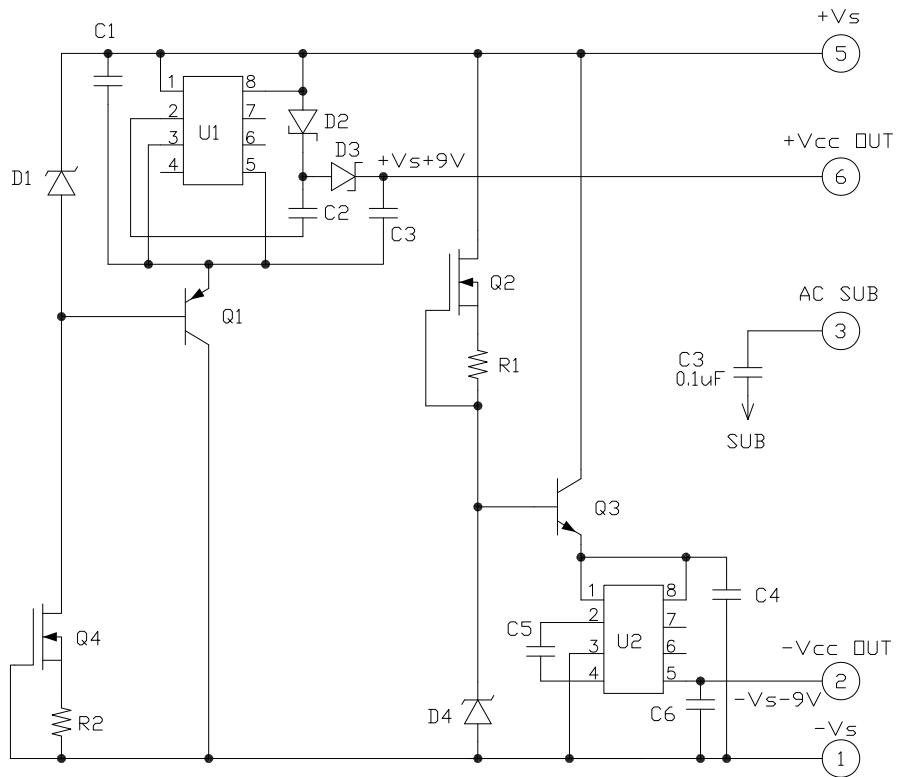
- **HIGH POWER AMPLIFIER ADD-ON**
- **ASSISTS POWER AMPS FOR SINGLE SUPPLY APPLICATIONS**

### DESCRIPTION

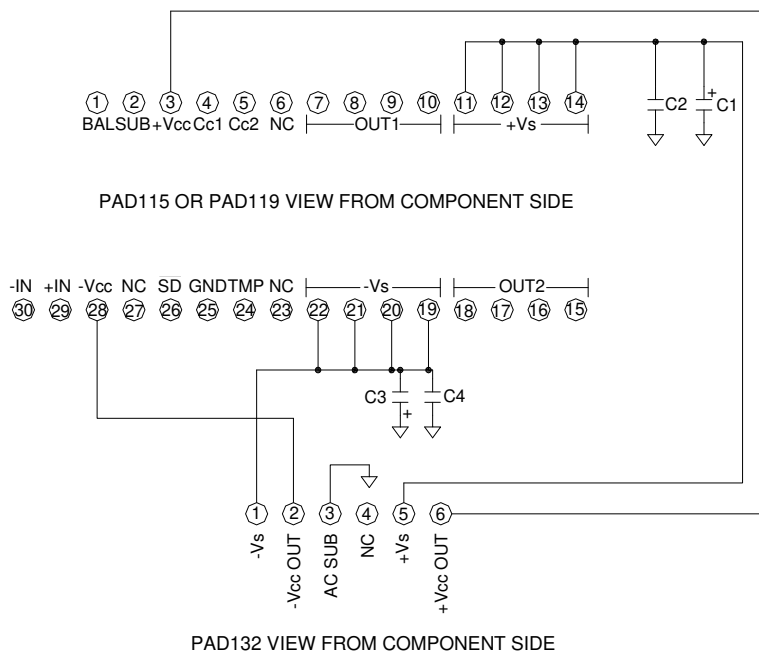
The PAD132 power supply accessory module is a compact dual switching power supply designed to provide a convenient, low-cost power supply that assists power amps to operate from a single high-power supply voltage. The PAD132 is compatible with the PAD115, PAD119 and PAD129 High Power Operational Amplifiers. With input voltages of +Vs and -Vs the PAD132 produces output voltages of +Vs+9 and -Vs-9 volts. The output voltages are connected to the amplifier's +Vcc and -Vcc power supply pins. Consequently, the small signal stages of the amplifier operate at higher voltages than the main power supply voltages, thus biasing the small signal stages such that single supply operation is assured by avoiding input stage common mode range violations. The PAD132 comes mounted to a heat sink for drop-in operation.



**EQUIVALENT CIRCUIT**



**PAD132 TYPICAL CONNECTION TO PAD119 OR PAD115**



**PowerAmp Design ♦ PAD132 ♦ POWER SUPPLY ACCESSORY MODULE**

**ABSOLUTE MAXIMUM RATINGS**

SUPPLY VOLTAGE, +Vs to -Vs	300V	OUTPUT CURRENT	± 12mA
OPERATING TEMPERATURE, case	-40 to +70°C	OUTPUT VOLTAGE, ± Vcc	± Vs ± 10V
TEMPERATURE, pin solder, 10s	200°C	TEMPERATURE RANGE, storage	-40 to 125°C

PARAMETER	TEST CONDITIONS <sup>1</sup>	MIN	TYP	MAX	UNITS
<b>POWER INPUTS, +Vs, -Vs</b>					
+Vs	Full temperature range	0		300	V
-Vs	Full temperature range	0		-300	V
+Vs to -Vs	Full temperature range	16		300	V
<b>OUTPUTS</b>					
+Vcc	I <sub>O</sub> = 12mA	+Vs+8.4		+Vs+10	V
-Vcc	I <sub>O</sub> = -12mA	-Vs-9		-Vs-10	V
Switching frequency			25		kHz
Ripple voltage	I <sub>O</sub> = ± 12mA		75		mVp-p

**NOTES:**

1. Unless otherwise noted: T<sub>C</sub>=25°C

### POWER SUPPLY INPUTS

The PAD132 is normally powered by the same voltages used to power the host amplifier. The PAD132 has its own input and output filter capacitors and so no additional bypassing is necessary. A current input ripple can be observed approximately twice the output load current at a duty cycle of 50%.

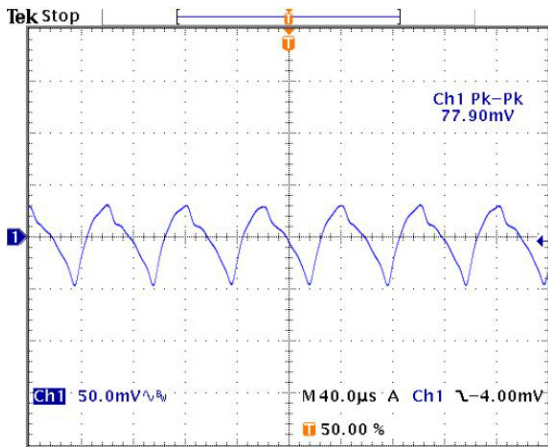
The PAD132 can be operated from a single power supply voltage, for example, zero (ground) and +200V. In this case the output voltages will be approximately -9V and +209V.

### OUTPUT VOLTAGES

The PAD132 output voltages are approximately 9V greater than the input power supply voltages. These voltages are tied to the  $\pm V_{CC}$  inputs for the host operational amplifier (see Fig. 2) on page 2. The output voltages have some ripple at approximately 25 kHz. The host amplifier's power supply rejection is able to reject most of the ripple amplitude but about 1 mVp-p (RTI) of residual ripple may be found at the output of the amplifier. The ripple can be reduced by adding external filter capacitors, but this is usually unnecessary.

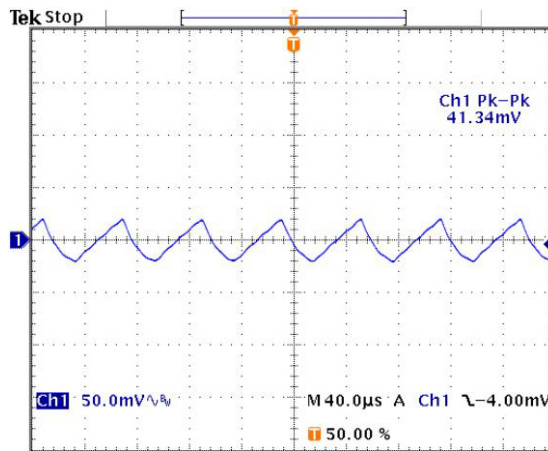
**+VCC OUTPUT RIPPLE**

The oscilloscope display at the left shows the PAD132 +Vcc output voltage ripple. The ripple can be reduced by adding an external filtering capacitor, but the amplifier rejects a large portion of this ripple.



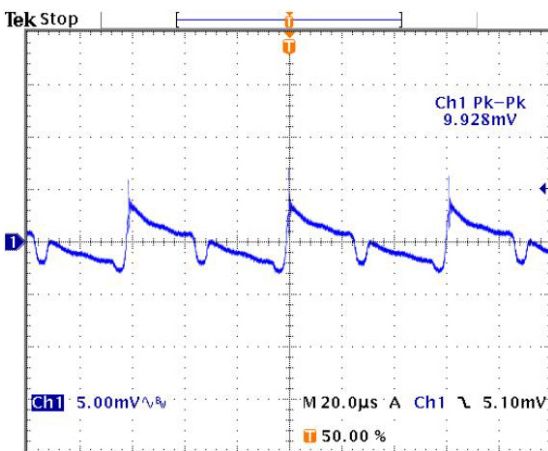
**-VCC OUTPUT RIPPLE**

The oscilloscope display at the right shows the PAD132 -Vcc output voltage ripple. The ripple can be reduced by adding an external filtering capacitor, but the amplifier rejects a large portion of this ripple. See below.

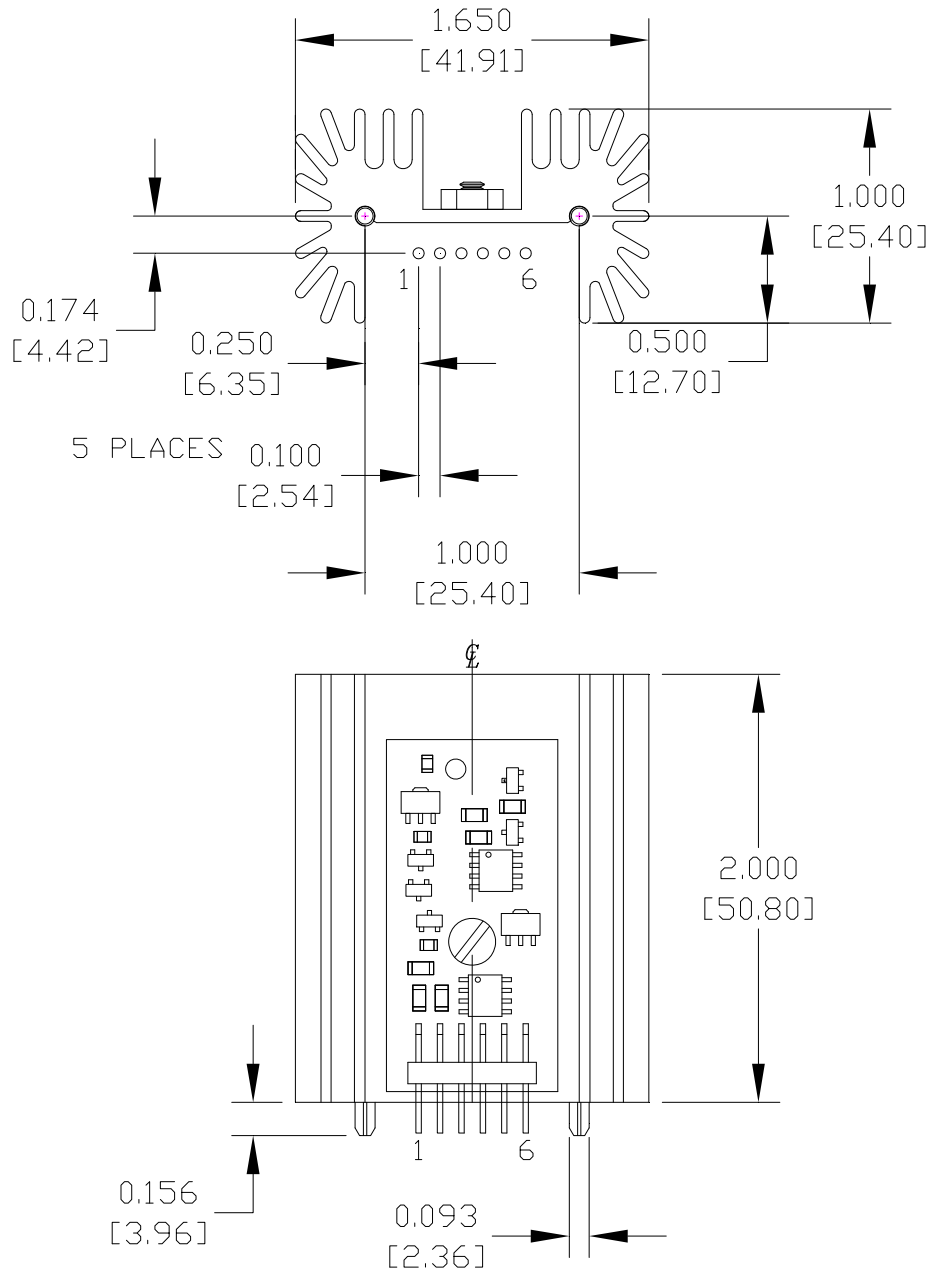


**AMPLIFIER OUTPUT RIPPLE WITH PAD132 POWER SUPPLY**

The oscilloscope display at the left shows the PAD119 amplifier output voltage ripple due to the PAD132 power supply ripple with the amplifier in a gain of 10. The ripple is about 10mVp-p in a gain of 10. Referred to the input the ripple is about 1mVp-p. The ripple can be reduced by adding external filtering capacitors, but the amplifier rejects a large portion of this ripple as can be seen by comparing this amplifier output ripple to the power supply output ripple as seen in the oscilloscope displays above.



**PAD119 OUTPUT VOLTAGE RIPPLE DUE TO PAD132 OUTPUT RIPPLE, G=10**



NOTES:

- PINS 1-6 ARE 0.025" SQUARE
- USE  $\varnothing 0.052$  FOR SOLDERED DEVICE PINS  
[ $\varnothing 1.32$ ]
- USE  $\varnothing 0.062$  FOR CAGE JACKS  
[ $\varnothing 1.57$ ]
- WEIGHT: 2.2 Oz. [63g]

**PowerAmp Design ♦ PAD132 ♦ POWER SUPPLY ACCESSORY MODULE**